

SHARP

A Series

Professional Installation Projector ideal for higher education, museum and rental & staging applications



4KUHD
READY

RBlaser
light source

Powerful LCD installation projector with an RB laser light source supports new, demanding projection applications.

Powerful Tools

- Multi-display support with Picture by Picture/Picture in Picture.
- TileMatrix (internal multi-screen splitter) enables 4Kx2K resolution utilizing 4 projectors without the need for external hardware.
- Built-in daisy chain capabilities support multi-display applications.
- Seamlessly blend multiple images with integrated edge blending capabilities.

Integrated

- 4K Ready - Display stunning 4K 60P content using Sharp's proprietary high performance video processing/scaling chip without the loss of critical details.
- Integrated software applications such as AMX Beacon, Crestron Roomview, Extron XTP and PJ Link allow for complete control system support.
- Learning of basic control of competitors product reduces the need for reprogramming of a control system lowering the cost of your installation by eliminating the need for costly reprogramming of a control system. (Supports competitors commands, call Sharp for complete list.)

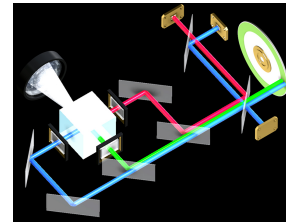


Flexible

- Enjoy greater installation flexibility with motorized bayonet style lenses providing quick and easy exchanges. Lens throw distances range from 4.25 to 141ft.
- Roll-free installation capabilities make this projector ideal for almost any install environment, including portrait orientation.

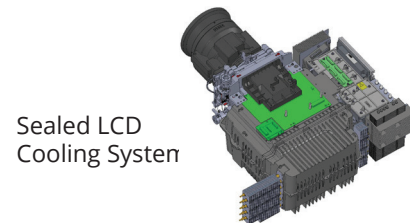
Laser

- RB (Red and Blue) Laser system achieves 92% of the DCI color space bringing content to life.
- Images appear immediately after power on due to instantaneous start up of the laser.
- Inorganic optical components create longer lifetime and greater peace of mind.



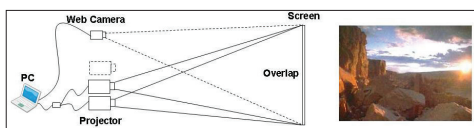
Filter Free

- Filter free LCD laser projector that is virtually maintenance free!
- IP5X certified Sealed LCD cooling system prevents dust from reaching the optics and eliminates the need for a filter.
- External air never enters the optical path.
- Dust artifacts cannot influence picture quality or decrease image brightness.



Stacking correction

Continuing with Sharp's full installation feature set, the A Series includes built-in stacking correction capabilities (up to four projectors). Staking correction allows the projectors to boost an image's brightness up to 80,000 lumens, which is ideal for larger-sized screens and environments with heavy ambient light. This feature also prevents the complete loss of an image, which can happen when using only one projector.



Edge blending

This function seamlessly blends multiple projected images to display a single high-resolution image.



ProAssist™

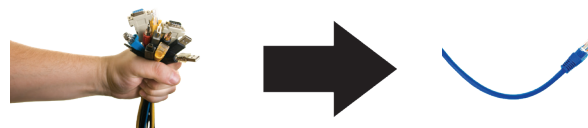
Projector management software for installation professionals provides full projector control for multiple screens to create the perfect image. Controls such as input switching, picture, lens, edge blending, uniformity and gamma control are adjustable through the GUI.

ProAssist™



Built-In HDBaseT Support

Simplify your installations with HDBaseT. Optimized for video applications and supporting uncompressed full HD digital video, audio, ethernet, power and various control signals. With only a single cable (up to 100m) to run, infrastructure and labor costs are reduced, installations are significantly easier, and there is no cable clutter to manage. With uncompressed HD video support, images have never been more stunning. What's more, control signals are contained in the same cable.



Get Connected with a Wide Selection of Inputs

- Multiple Digital computer inputs ensure quick switching between presentations.
- Three audio inputs (HDMI1™ & HDMI2™ and HDBaseT) make it easy to add sound to enhance your presentations.

Digital Inputs

Among the A Series' wide selection of inputs are dual HDMI w/HDCP and HDBaseT w/HDCP for connecting to high-definition sources such as Blu-ray players, cable boxes, satellite receivers and personal computers.



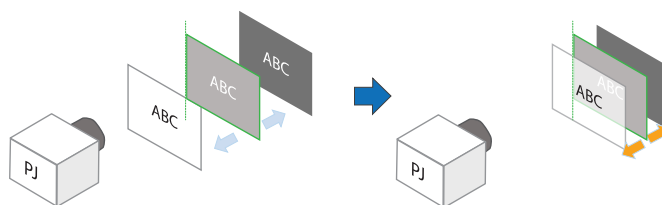
Remote control

Wired and wireless backlit remote allows you to adjust for complete control of the projectors menu structure in a well lit or dark environment. Direct controls such as lamp mode, aspect ratio, volume and input selection eliminates multiple button pushes.



Adaptive Focus Control

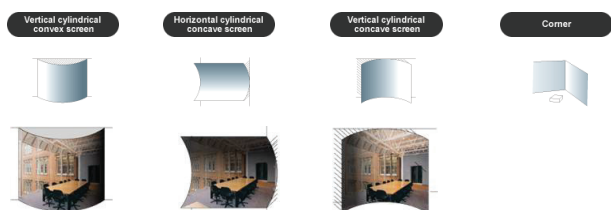
Automatically compensates for focus shifts caused by changes in light amount.



Advanced Software Features

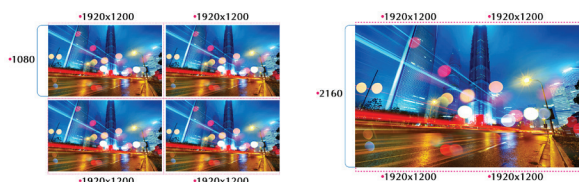
Geometric Correction

Projecting an image isn't confined to a standard flat screen or wall with the A Series. Geometric correction allows these models to project an image on spheres, cylinders, corner angles and many more non-standard surfaces.



Screen Splitter

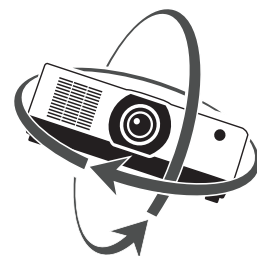
Sharp is committed to bringing the latest and greatest innovation to projectors. Multi-display capabilities and TileMatrix technologies are integrated into the new A Series projectors. This processing is all done internally and therefore eliminates the additional hardware typically required to produce a beautiful 4K resolution image.



Screen Splitter (Multi Display) by Daisy Chain

Roll Free

When installation requirements dictate the projector needs to be placed at different angles the A Series with Roll Free capabilities assures it is the correct projector of choice.



Synchronous Control

When operating multiple projectors, such as multi-screen or stacked, orders to one set are reflected to all other sets. One projector can be used as a reference to synchronize the other three projectors. For example, if you use Shutter in Main, all the subs are also linked.



Unique Features

Variable audio-out enables the remote control to be used to adjust volume of self-powered external speakers that are connected to the projector. In stand-by mode, the audio-out stays active, allowing the last input used to pass to the self-powered external speakers.

Advanced AccuBlend™ ensures detailed images when non-native resolution sources are connected to the projector.

64-step image magnification with location control.

Built-in HTTP page for control and monitoring over a LAN network. Email notification of error messages or lamp end-of-life can be sent to remote locations.

Limited Warranty

Registered owners receive a five (5) years or 20,000 hours (whichever comes first) parts and labor warranty including InstaCare next business day exchange.

In the Box

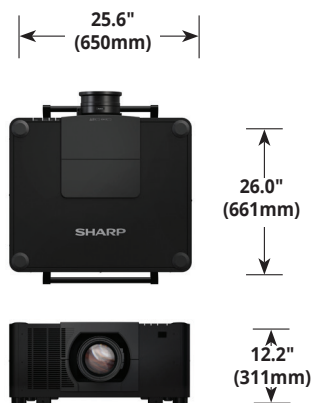
Remote control, batteries, power cord, user's manual on CD-ROM, quick start guide, product registration card.

Accessories

RMT-PJ40	Replacement Remote Control
Optional Lenses	NP51ZL, NP52ZL, NP53ZL, NP54ZL, NP55ZL, NP56ZL, XP-51ZL, XP-52ZL, XP-53ZL, XP-54ZL, XP-55ZL, XP-56ZL
IPJ2000CM	Ceiling Mount
AEC006009	Adjustable Extension Column, 6" - 9"
AEC012018	Adjustable Extension Column, 12" - 18" Adjustable
AEC0203	Extension Column, 2' - 3'
AEC0305	Adjustable Extension Column, 3' - 5' Fly Cage

Ordering Model Numbers

XP-A201U-B



		XP-A201U-B
Light Output (lumens)	Center	20,000
	Normal	14,000
	ECO Mode OFF	13,500
Resolution	Native	WUXGA 1920x1200
	Maximum	4K 4096 x 2160
Contrast Ratio (up to)		3,000,000:1 (with Dynamic Contrast)
Laser Life (up to)		20,000 hours
Screen Size (diagonal)		80 to 500 in./ 2.0 to 12.7m
		NP51ZL / XP-51ZL 0.53 - 0.65:1
		NP52ZL / XP-52ZL 0.65 - 0.87:1
		NP53ZL / XP-53ZL 0.86 - 1.25:1
		NP54ZL / XP-54ZL 1.24 - 2.01:1
		NP55ZL / XP-55ZL 1.98 - 3.95:1
		NP56ZL/XP-56ZL 3.92 - 7.4:1
Projection Distance		3.58 to 141 ft. / 1.09 to 43m
Projection Angle		5.8 to 18.1° tele / 11.4 to 25.8° wide
Lens	Zoom	Motorized
		NP51ZL / XP-51ZL 1.23x
		NP52ZL / XP-52ZL 1.34x
		NP53ZL / XP-53ZL 1.45x
		NP54ZL / XP-54ZL 1.62x
		NP55ZL / XP-55ZL 1.99x
	Focus	NP56ZL / XP-56ZL 1.91x
		NP51ZL/XP-51ZL Motorized zoom / focus, F=185 to 2.2, f= 12.0 - 14.8mm, 11.7 lbs. / 5.3 kg
		NP52ZL/XP-52ZL Motorized zoom / focus, F=1.84 to 2.25, f= 14.4 - 19.3mm, 11.5 lbs. / 5.2 kg
		NP53ZL/XP-53ZL Motorized zoom / focus, F=1.8 to 2.24, f= 19.0 - 27.6mm, 11.2 lbs. / 5.1 kg
		NP54ZL/XP-54ZL Motorized zoom / focus, F=1.8 to 2.24, f= 27.7 - 44.9mm, 9.0 lbs. / 4.1 kg
		NP55ZL/XP-55ZL Motorized zoom / focus, F=1.84 to 2.58, f= 43.8 - 87.2mm, 11.0 lbs. / 5.0 kg
		NP56ZL/XP-56ZL Motorized zoom / focus, F=2.0 to 2.5, f= 49.7 to 99.8mm, 10.1 lbs. / 4.6 kg
	Shift	+/-25% Vertical, +/-65% Horizontal (NP53ZL/XP-53ZL, NP54ZL/XP-54ZL, NP55ZL/XP-55ZL, NP56ZL/XP-56ZL), +/-25% Vertical, +/-50% Horizontal (NP51ZL/XP-51ZL), +/-25% Vertical, +/-55% Horizontal (NP52ZL/XP-52ZL)
	Shutter	Laser Shutter
Keystone Correction		+/- 40° horizontal, +/- 30° vertical
Synchronization Range	Horizontal	15KHz/24-153kHz
	Vertical	50-85Hz, 100Hz, 120Hz
Supported Video Standards		NTSC, NTSC4.43, PAL, PAL-60, PAL-M, PAL-N, SECAM
SD/HD Video Signal Compatibility		480i, 480p, 576i, 576p, 720p, 1080i, 1080p, 4K
PC Signal Compatibility		VGA, SVGA, XGA, SXGA, SXGA+, UXGA, WUXGA, Quad HD
Macintosh Compatibility		Yes
Input Terminals	RGB1 (digital)	HDMI (V2.0) w/HDCP (V2.2/1.4)
	RGB2 (digital)	HDMI (V2.0) w/HDCP (V2.2/1.4)
	RGB3 (digital)	HDBaseT w/HDCP (V2.2/1.4)
	RGB4 (digital)	3G / HD/ SD SDI (SMPTE ST 424M / SMPTE 292M / SMPTE 259M)
Output Terminals	Monitor Out	HDBaseT Repeater
	Audio Out	Stereo Mini Jack
External Control		RS-232, IR, Wired Remote, HDBaseT, DDC/CI, RJ-45, USB (USB 2.0)
Sync Compatibility		Separate Sync / Composite Sync / Sync on G
Power Requirements		100-240V AC, 50/60 Hz
Input Current		11.9A - 7.8A
Power Consumption		
(ECO off/ECO Mode/Standby/Standby-Power Saving)		1530W / 1400W / 0.9W / 0.32WW
Installation Orientation		Floor/Front, Floor/Rear, Ceiling/Front, Ceiling/Rear
Product Dimensions (WxHxD)		25.6 x 12.2 x 26.0in. / 650 x 311 x 661mm
Net Weight		85.3 lbs. / 38.7 kg
Shipping Dimensions (WxHxD)		31.9 x 17.1 x 28.9 in. / 810 x 435 x 735 mm
Gross Weight		102.5 lbs. / 46.5 kg
Fan Noise		42 dB normal / 34 dB silent mode
Regulations	US	USA UL60950-1: 2nd edition, UL 62368-1, 3rd Edition, FCC Part15 Subpart B(ANSI C63.4:2014)
	Canada	CAN/CSA C22.2 No.62368-1-19, 3rd Edition, ICES-003 Issue 7 (ANSI C63.4-2014)
Operating	Temperature	32-113°F / 0-45°C
	Humidity	20 to 85% Humidity (Non-Condensing)
Storage	Temperature	14-122°F / -10 50°C
	Humidity	20% - 80% (non-condensing)
Ordering Model Number		XP-A201U-B



SHARP

SHARP ELECTRONICS CORPORATION
100 Paragon Drive, Montvale, NJ 07645
1-800-BE-SHARP • www.sharppusa.com

©2024 Sharp Electronics Corporation. All rights reserved. Sharp is a registered trademark of Sharp Corporation and/or its affiliated companies. All other trademarks are the property of their respective owners.